

Features

- ✧ A pair of output contacts, open in normal state, close all the time when alarming.
- ✧ Built-in microprocessor collects and processes data in real time.
- ✧ Rate of rise and fixed temperature alarm modes.

Description

R6602 Conventional Heat Detector is non-addressable. With built-in microprocessor, it's fixed with high reliable fire judging program and works stably.

The sensor is NTC thermistor; the resistance of the thermistor reduces with the rise of temperature. Amplified output signal is A/D transformed by microprocessor, which processes the rise of temperature and its volume after calculated by special arithmetic. When it overpasses the alarm threshold, output control signal drives the relay to act, and lights the indicator.

Connection and Cabling

Fig. 1 shows the detector bottom and Fig. 2 the base.

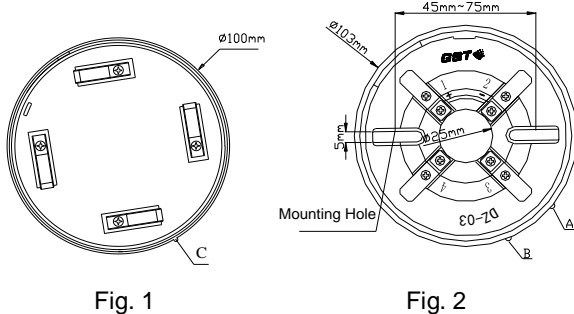


Fig. 1

Fig. 2

There are four conducting pieces on the base, each carrying a terminal with number. Terminal "2" and "4" are connected with the power, polarity-insensitive. "1", "3" connects with relay output.

Recommended Cabling

Adopt 1.0mm² or above fire cable, subject to local codes.



Installation

A fixed installation direction is ensured by the location elements on the detector and the base. Fix the base with two tapping screws, and then align mark C on the detector with A on the base, rotate the detector to align mark C with mark B (Refer to Fig. 1 and 2 for the position of the marks), the detector will be fitted to the base.

Fig. 3 shows the mounting of the detector.

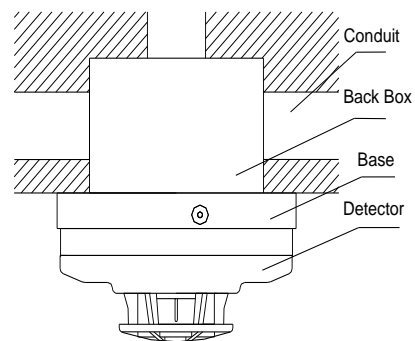


Fig. 3

Application

The detector is applicable to hotels, warehouses. It can work when connected to 12VDC power.

Specification

Operating Voltage	12VDC (9.6VDC~14.4VDC)
Standby Current	≤1mA
Alarm Current	≤20mA
Indicator	Red. Quiet in polling, lights in alarming.
Alarm Clear	Instantaneous Power-off (5s MAX, 2.5VDC MAX.)
Power-up Time	≤10s
Action Temperature	58℃
Responsive Velocity	3℃/min
Output control type	Volt-free normally open, Keep closed after alarming
Output Capacitance	30VDC/1A
Ingress Protection Rating	IP33
Environmental Temperature	-10℃~+50℃
Relative Humidity	≤95%, non condensing
Material and Color of Enclosure	ABS, white (RAL 9016)
Dimensions	Diameter 100mm Height 58mm (with base)
Mounting Hole Distance	45mm~75mm
Weight	About 120g

Accessories and Tools

Model	Name	Remark
DZ-03	Base	Order separately

Maintenance

- ✧ The detector should be installed just before commission and kept well before installation, taken corresponding measures for dust-proof, damp-proof and corrosion-proof.
- ✧ The dust cover cannot be removed until the project has been plunged into usage. Otherwise the detector can't alarm normally.
- ✧ Clean the detector at least once a year to ensure normal operation of the system.
- ✧ Before cleaning the detector, notify the proper authorities that the system is undergoing maintenance and will temporarily be out of service. Disable the zone or system undergoing maintenance to avoid unwanted alarms.
- ✧ The detector should be tested when it is installed after cleaning.
- ✧ Fire simulation test should be made to the detector at least once half a year, ensuring normal operation of the detector.

Limited Warranty

GST warrants that the product will be free of charge for repairing or replacing from defects in design, materials and workmanship during the warranty period. This warranty doesn't cover any product that is found to have been improperly installed or used in any way not in accordance with the instructions supplied with the product. Anybody, including the agents, distributors or employees, is not in the position to amend the contents of this warranty. Please contact your local distributor for products not covered by this warranty.

This Data Sheet is subject to change without notice. Please contact GST for more information or questions.

Gulf Security Technology Co., Ltd.

No. 80, Changjiang East Road, QETDZ, Qinhuangdao, Hebei, P. R. China 066004

Tel: +86 (0) 335 8502434 Fax: +86 (0) 335 8502532

service.gst@fs.utc.com www.gst.com.cn